

# PUBLIC NOTICE

## Saddle Butte Wind Park

### Notice of Public Hearing and Request for Comments on the Saddle Butte Wind Park Draft Proposed Order

---

#### Summary

Date Issued: Aug. 9, 2013

Proposal: Site Certificate for a 399-megawatt wind power facility

Facility Location: Gilliam and Morrow Counties; approximately 20 miles south of the Columbia River.

#### Public Hearing:

**Date:** Monday, Sept. 9, 2013

**Time:** 6:00 p.m.

**Location:** Lone Community School  
445 Spring Street  
Ione, Oregon 97843

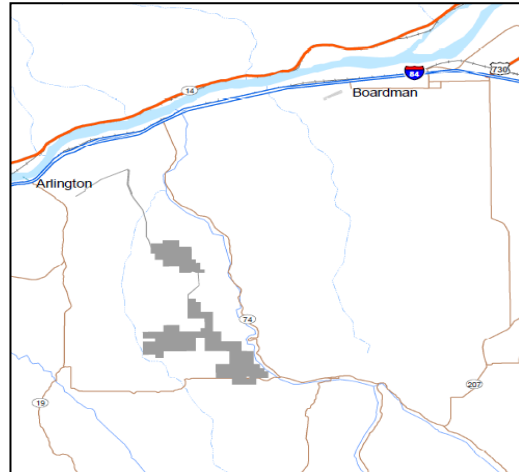
Comment Deadline: Sept. 9, 2013 (close of the record of the public hearing).

#### Introduction

The Oregon Department of Energy, staff to the Energy Facility Siting Council, received an Application for Site Certificate from Saddle Butte Wind, LLC (wholly owned by Columbia Wind, LLC, which is wholly owned by Caithness Corporation), for a 399-megawatt wind-powered electric generating facility. ODOE issued a Draft Proposed Order on the Application for Site Certificate on Aug. 9, 2013. The Draft Proposed Order recommends EFSC approve the Application for Site Certificate and grant a Site Certificate, subject to the conditions listed in the order.

#### Description of the Facility

The proposed facility consists of a wind-powered electric generating facility. The facility would include 133 wind turbines, a power collection system, collector substations, operations and maintenance buildings, control system, meteorological towers, above ground and



underground transmission lines, access roads and temporary construction areas.

#### Location of Proposed Facility

The proposed facility is located in Morrow and Gilliam Counties on 13,555 acres of private land. The northern site boundary is approximately 20 miles south of the Columbia River between Eightmile Canyon and State Highway 74.

#### Public Hearing and Comment Period

A Public Hearing on the Draft Proposed Order will be held on Monday, Sept. 9, 2013 at 6:00 p.m. in the cafeteria of the Lone Community School. Written comments are due no later than the close of the Public Hearing on that date. Written comments may be submitted prior to the Public Hearing by mail, e-mail, hand-delivery or fax to the hearing officer, in care of:

Jo Morgan, Siting Analyst  
Oregon Department of Energy  
625 Marion Street NE  
Salem, OR 97301  
E-mail: [jo.l.morgan@state.or.us](mailto:jo.l.morgan@state.or.us)  
Phone: 503-373-0076  
Toll-free in Oregon: 800-221-8035  
Fax: 503-373-7806

Written or oral comments may also be provided at the Public Hearing. The Council will not accept comments on the Application for Site Certificate or on the Draft Proposed Order after the close of the record of the Public Hearing.

To be eligible to participate in a contested case on this application, a person must raise an issue either in person at the public hearing or in a written comment submitted after the date of this notice and received by ODOE before the record closes on Sept. 9, 2013. Even if a person commented earlier in the process, that person must raise issues, either in person at the Public Hearing or in writing during the Draft Proposed Order comment period, to be eligible to participate in the contested case.

For consideration in the contested case, issues raised must be within the Council's jurisdiction, must relate to a siting standard and must be raised with sufficient specificity for the Council, ODOE, and the applicant to understand the issue being raised and to respond to the issue. To raise an issue with sufficient specificity, a person must present facts that support the person's position on the issue.

### **EFSC Decision Process**

Following the Public Hearing, the Council will review the Draft Proposed Order and Public Hearing comments at its meeting on Sept. 27, 2013. Following its deliberations, the Council will direct agency staff to prepare and issue a Proposed Order to approve or deny the application and to issue a Notice of Contested Case. Following the contested case, the Council will issue a Final Order on the Application. More information about the contested case process is available on the Department of Energy's website at <http://www.oregon.gov/energy/Siting/Pages/process.aspx>.

### **More Information**

Please contact Jo Morgan, Siting Analyst, at the e-mail address, phone number, or mailing address listed above. More information about the facility

and updates on the review process is available using any of the options below.

#### **1) ODOE's website**

More details on Saddle Butte Wind Park, including the Application for Site Certificate and the Draft Proposed Order, are available online on at

<http://www.oregon.gov/energy/Siting/Pages/SBW.aspx>.

#### **2) Updates by e-mail**

Subscribe to GovDelivery for e-mail updates on Saddle Butte or other energy facilities under EFSC jurisdiction. GovDelivery is an automated e-mail system that allows interested members of the public to receive information about ODOE projects and events. For more information, please visit:

<http://tinyurl.com/EFSC-email>.

#### **3) In hardcopy**

Copies of the Application for Site Certificate and Draft Proposed Order are available for public inspection at:

Oregon Department of Energy  
625 Marion Street NE  
Salem, OR 97301

Arlington Public Library  
500 West First Street  
Arlington, OR 97812

Gilliam County Library  
310 S. Main Street  
Condon, OR 97823

Boardman Public Library  
200 South Main Street  
Boardman, OR 97818

### **Accessibility information**

ODOE is committed to accommodating people with disabilities. If you require any special physical or language accommodations, or need information in an alternate format, please contact Matt Lawyer at 503-378-3895, toll-free in Oregon at 800-221-8035, or e-mail to [matthew.lawyer@state.or.us](mailto:matthew.lawyer@state.or.us)